

# BAS RUM 2020

## Speaker Biographies

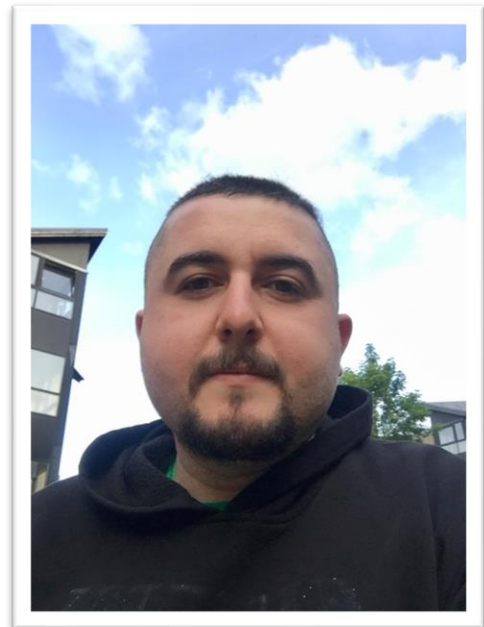
### Abi Roper



Abi Roper is a speech and language therapist and technologist based at City, University of London where she is currently undertaking post-doctoral interdisciplinary research across the division of Language and Communication Science and the centre for Human-Computer Interaction. Abi qualified to practise in 2008 and has since worked in both clinical and research settings. In 2016, she completed her PhD, **Computer Delivery of Gesture Therapy for People with Severe Aphasia**. Abi has a particular research passion for combining the fields of speech and language therapy and technology and has been involved with a number of innovative research projects in this field.

### Şevket Özdemir

Şevket Özdemir, PhD, received his bachelor's degree in English Linguistics from Hacettepe University, and master's and doctoral degrees in Speech and Language Therapy from Anadolu University (TR). He was a visiting scholar at Nursing, Midwifery, and Allied Health Professions Research Unit at GCU (UK). He is currently an Instructor at the Department of Special Education at Hacettepe University."



## Jon Hunt



Jon Hunt is an independent Speech and Language Therapist based in Bristol, UK. Qualifying at City University of London in 1992, he trained clinically under Eirian Jones at Addenbrokes Hospital in Cambridge. After 20 years working as an aphasia specialist in the NHS, he began work on *Cuespeak*, an app designed to help clinicians to create highly bespoke therapy programmes to supplement face to face therapy for aphasia and apraxia of speech. He is particularly interested in how we can optimise language therapy to maximise its impact on everyday communication.

## Bev Snowden

Bev Snowden is a speech and language therapist working in stroke and neuro rehab at Northern Devon Healthcare NHS Trust in Barnstaple North Devon. She completed an MRes at Plymouth Marion University in March 2020.



## **Caitlin Longman**



Caitlin Longman is a speech and language therapist and audiologist with an interest in aphasia, accessible technology and health communication. She is based at the Stroke Association as an Aphasia Project Manager with a focus on digital access. She completed her BA in Speech & Hearing Therapy at the University of the Witwatersrand, South Africa followed by an MA in Speech Pathology. In the South African context, Caitlin worked in both rural and urban health care settings before completing her MSc in Global Health at the Karolinska Institute in Stockholm. Caitlin is passionate about producing resources and services in collaboration with people with aphasia and developing aphasia-friendly materials. She is a member of the Collaboration of Aphasia Trialists and part of their dissemination team and a member of INSsPiRE, an International Network of Stroke secondary Prevention Researchers. Caitlin currently lives in Glasgow, Scotland.

## **Jane Marshall**

Jane Marshall qualified as a speech and language therapist in 1987. She worked in a hospital aphasia unit before studying for her PhD. Her research at City, University of London has explored numerous aspects of aphasia including sentence processing, jargon aphasia, aphasia in bilingual language users and aphasia in Deaf users of sign language. Much of her research has focused on intervention, including attempts to remediate the language impairment and uses of compensatory strategies. Most recently, she has explored technological applications in aphasia therapy.



## **Celia Woolf**



Celia Woolf is the Director of the City Aphasia Research Clinic in the Division of Language & Communication Science at City University London, as well as a Senior Lecturer at Barts & The London School of Medicine QMUL. Her career over the past three decades has spanned a broad range of approaches to aphasia therapy, from pioneering interventions based on a social model of disability to doctoral and post-doctoral research into speech perception deficits in aphasia. Celia trained as a Speech & Language Therapist after a first degree in Linguistics & Cognitive Science and initially worked in the NHS, specialising in work with adults who have communication difficulties due to stroke or other neurological illnesses. She is co-author of *Beyond Aphasia* (Pound, Parr, Lindsay & Woolf, 2000) a book which has influenced practice across the UK and internationally. In recent years her research has focused on technology-enhanced approaches to aphasia therapy, through projects such as CommuniCATE, EVA Park and READ-IT.